

# School of Business Assessment Results for Public Information

As of March 13, 2023

# School of Business Assessment Results

The results below illustrate the performance of Mount St. Joseph University business students compared to ACBSP Region 4, Faith-Based Institutions, the Higher Learning Commission, Schools Located in the US, and Privately Owned Universities. This data demonstrates how current Mount St. Joseph University undergraduate business students perform. Data from prior years can be located on our website under <https://www.msj.edu/business/ACBSP-Learning-Outcomes-Summary-3.pdf>. In an effort to improve our understanding of student performance MSJ has undertaken a new program of assessment as of 2021-22 academic year, and thus all of the prior year data does not share the same evaluation techniques. *It is important to note that these results are setting benchmarks for our programs to use to improve future student performance.*

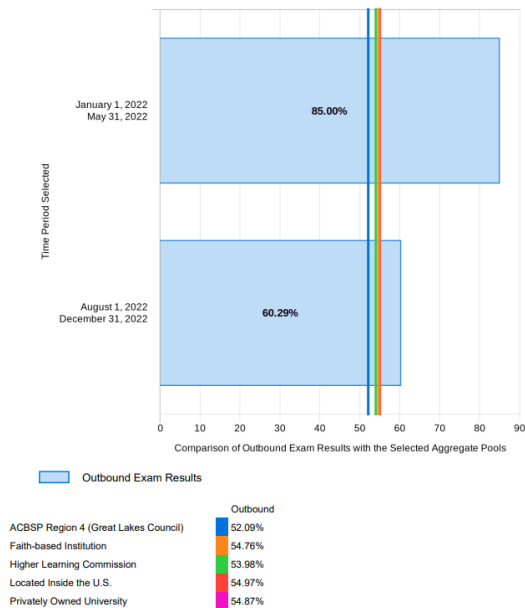
## Undergraduate Results Over Time

The results below are from course assessments administered through Peregrine Global Services. Outbound examinations are assessed as students finish a specific course’s material. **Mount St. Joseph University’s performance is indicated by the light blue bar graph.**

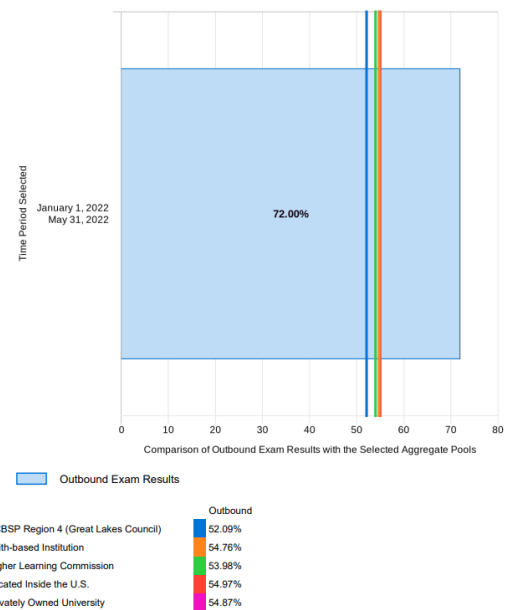
### Courses

#### Accounting

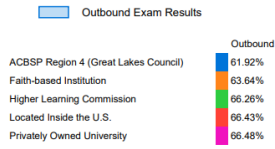
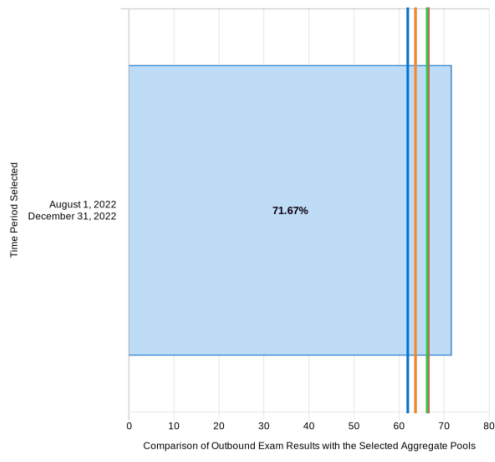
##### Traditional (n=18)



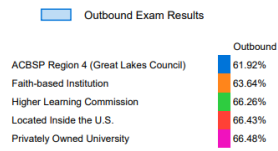
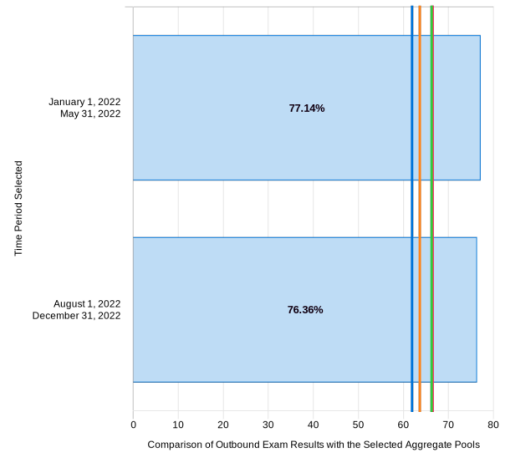
##### Online (n=5)



## Business Communications Traditional (n=21)

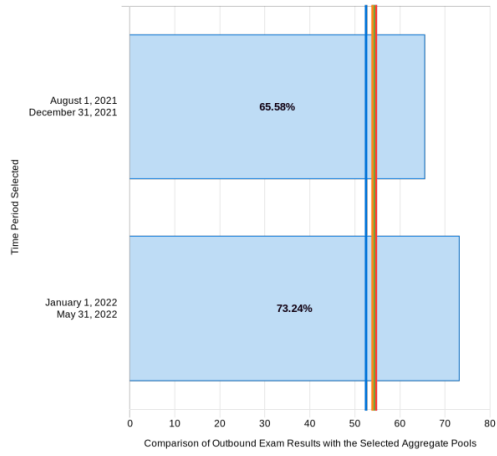


## Online (n=43)

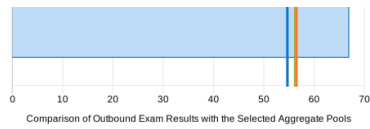


# Macroeconomics

## Traditional (n=43)



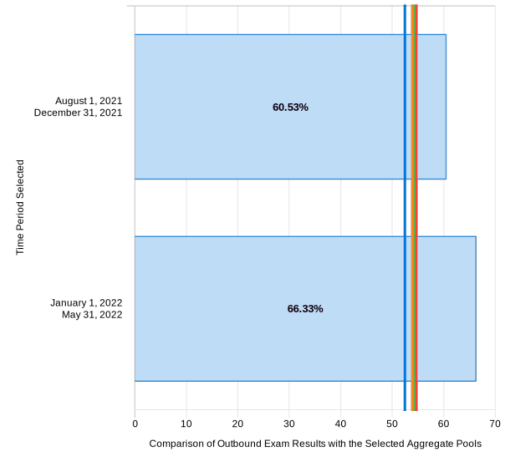
Outbound Exam Results



Outbound Exam Results



## Online (n=34)



Outbound Exam Results

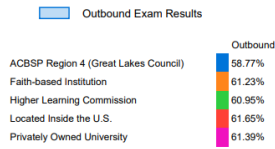
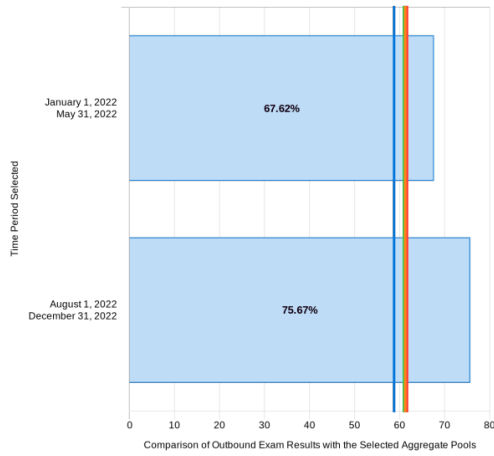


# Microeconomics

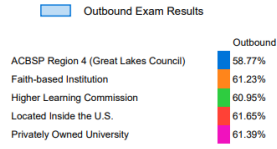
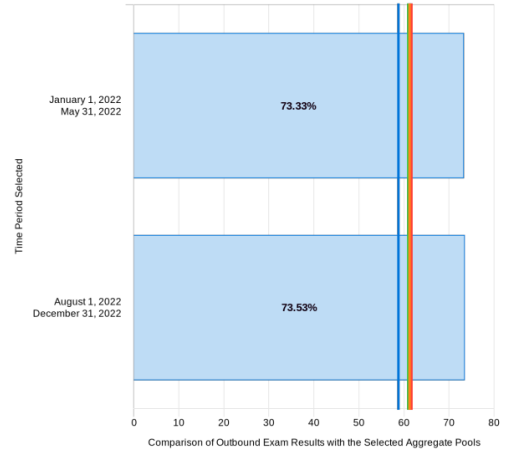
## Traditional (n=59)

# Marketing

## Traditional (n=36)

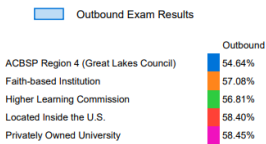
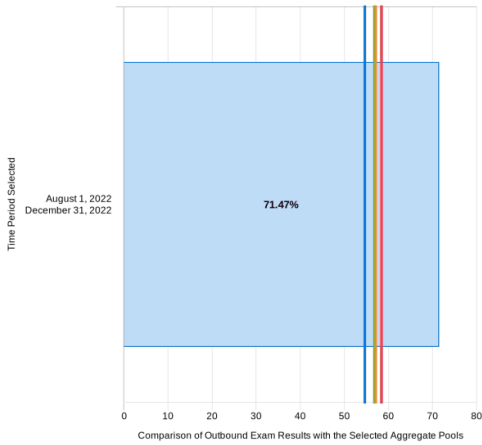


## Online (n=35)



# Management/Organizational Behavior

## Traditional (n=34)

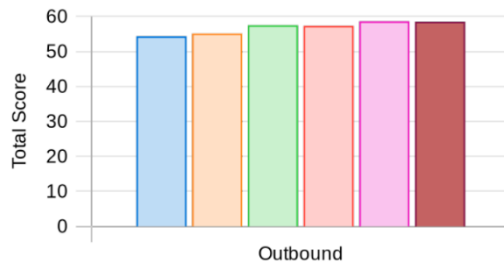


## Major

The results below are from the outbound assessment students take in their last semester prior to graduation. The assessment covers nine core competencies common to most business programs.

All Business Graduates  
(n=26)

Comparison of Outbound Exam Results  
with the Selected Aggregate Pools



School/Aggregate	Outbound %
Mount St. Joseph University	54.34%
ACBSP Region 4 (Great Lakes Council)	55.15%
Faith-based Institution	57.47%
Higher Learning Commission	57.32%
Located Inside the U.S.	58.61%
Privately Owned University	58.51%